

CENSUS IN SCHOOLS

Sample Junior Cycle Geography
Questions Based On CSO Infographics

CENSUS
3 APRIL 2022
www.census.ie



An
Phríomh-Oifig
Staidrimh

Central
Statistics
Office

Table of Contents

Theme A: The Journey Of A Census Form	2
Theme B: The Census – Our Role	3
Theme C: Census Information	4
Theme D: The Digital Consumer 2021	6
Theme E: Population And Migration Estimates April 2021	7
Theme F: Environmental Challenges: Global Climate Change	9
Theme G: People And Where They Live	11
Theme H: Managing Our Resources (Sdg 7)	12
Theme I: Education And Levels Of Development (Sdg 4)	13
Theme J: Contrasts In European Development	14
Theme K: People And Gender Equality	15
Theme L: Women And Men In Ireland 2019	16
Theme N: Ecosystems And Sustainability	17
Theme O: Measuring Ireland’s Progress In 2016	18
Theme P: Ireland’s Trade In Goods 2019	19
Theme Q: Agricultural Land Prices In Ireland 2018	20
Theme R: Fdi In Ireland 2017	21

Geographical skills

Reading and interpretation skills

Theme A: The journey of a census form

Study Fig. 1 which shows the journey of the 2022 census form.

Answer the questions which follow.

<p>Step 1: The Central Statistics Office (CSO) consult with the citizens of Ireland and then put the Census Form together.</p>	<p>Step 2: The Census Forms are designed and checked (and checked again) then translated into Irish.</p>	<p>Step 3: Over 2 million Census Forms are printed and delivered to the CSO warehouse - they then go to 466 sites around Ireland.</p>	<p>Step 4: Census Enumerators (5,100) deliver Census Forms to every household in Ireland before Census Night.</p>	<p>Step 5: Census Forms are completed in every household on Census Night, Sunday, 3rd April 2022.</p>
<p>Step 6: Census Enumerators collect the Census Forms and answer any questions from respondents.</p>	<p>Step 7: The Census Forms are scanned and the information is analysed, summarised and prepared for publication.</p>	<p>Step 8: The initial results of Census 2022 are released to the public in Summer 2022 and definitive results will be published between April and December 2023.</p>	<p>Step 9: Plans are made for the future of Ireland (locally, regionally and nationally) based on the data from Census 2022.</p>	<p>Step 10: And then the process starts all over again for the next census!</p>

Fig 1.

(i) What night of the week will the census be held in 2022?

(ii) How many Enumerators will deliver the forms to every household in Ireland in 2022?

(iii) When will the results be available?

(iv) Briefly explain the importance of the work of the Central Statistics Office (CSO)?

Geographical skills

Applied Skills

Theme B: The Census – our role



(i) What can we, as students, do to help Census 2022 run as smoothly as possible?

(ii) What can people in our community do to make Census 2022 a huge success?

(iii) Create a slogan for Census 2022 that would encourage all citizens to complete their Census Forms on Census Night.

Geographical skills

Applied skills and reading and interpretation skills

Theme C: Census Information

Study Fig. 3 which shows information on the Census in Ireland.

Answer the questions which follow.



“The census is a unique count of everyone present in Ireland on census night and provides essential information for planning and decision making”

Pádraig Dalton
Director General of the CSO



Anyone convicted of not filling out the Census may be prosecuted and fined (up to €2,500 on summary conviction and up to €44,440 on conviction on indictment)



The 2016 Census put the population of Ireland at 4,761,865 - a 3.6% increase on 2011



In 2001, the census was postponed due to the outbreak of foot and mouth disease, and took place the following year



8 New Questions on 2022 Census form:

- Renewable energy sources
- Internet access and devices
- Smoke alarms
- Smoking
- Working from home
- Volunteering
- Childcare
- Travelling home from work, school or college



The Government decided to postpone the April 2021 Census to April 2022 on the advice of the Central Statistics Office due to the Covid-19 pandemic

Fig 3.

(i) How many new questions are appearing on the 2022 census form?

(ii) Why was the 2001 census postponed until 2002?

(iii) Did the Irish population increase or decrease from the census data of 2011 to 2016?

(iv) Why is the information collected in the census important according to Pádraig Dalton, Director General of the CSO?

(v) What is the maximum fine for not completing your census form?

3.9 synthesise their learning of population, settlement and human development within the process of globalisation.

Theme D: The Digital Consumer

Study Fig. 4 which shows Digital Consumer Behaviours in Households in 2021.

Answer the questions which follow.

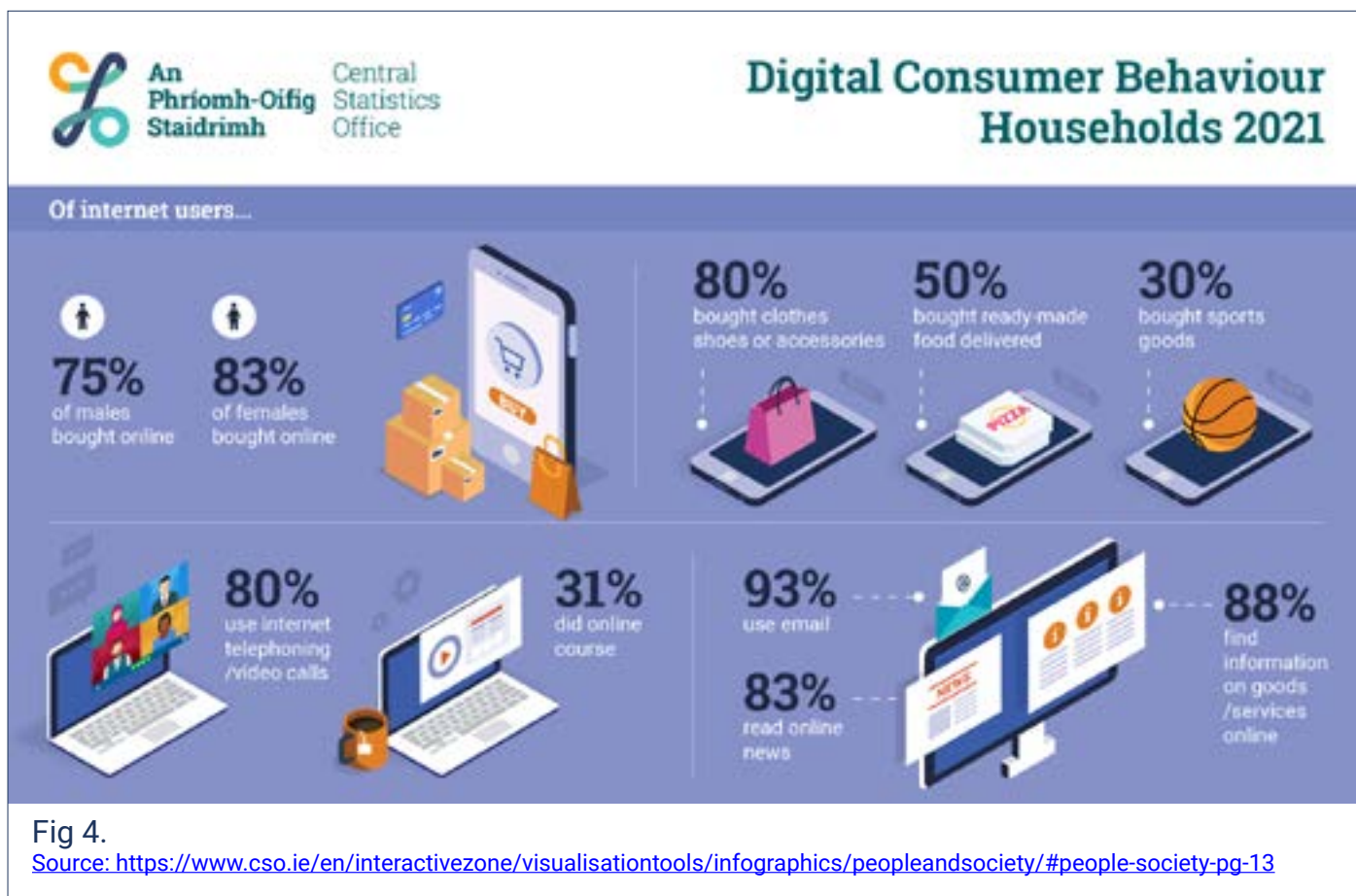


Fig 4.

Source: <https://www.cso.ie/en/interactivezone/visualisationtools/infographics/peopleandsociety/#people-society-pg-13>

(i) State the % of internet users in Ireland who bought clothes, shoes or accessories online in 2021?

(ii) How many people read online news?

(iii) State the meaning of the term globalisation.

L.O. 3.2 investigate the causes and consequences of migration

Theme E: Population and Migration Estimates April 2021

Study Fig. 5 which shows Population & Migration Estimates – April 2021.

Answer the questions which follow.

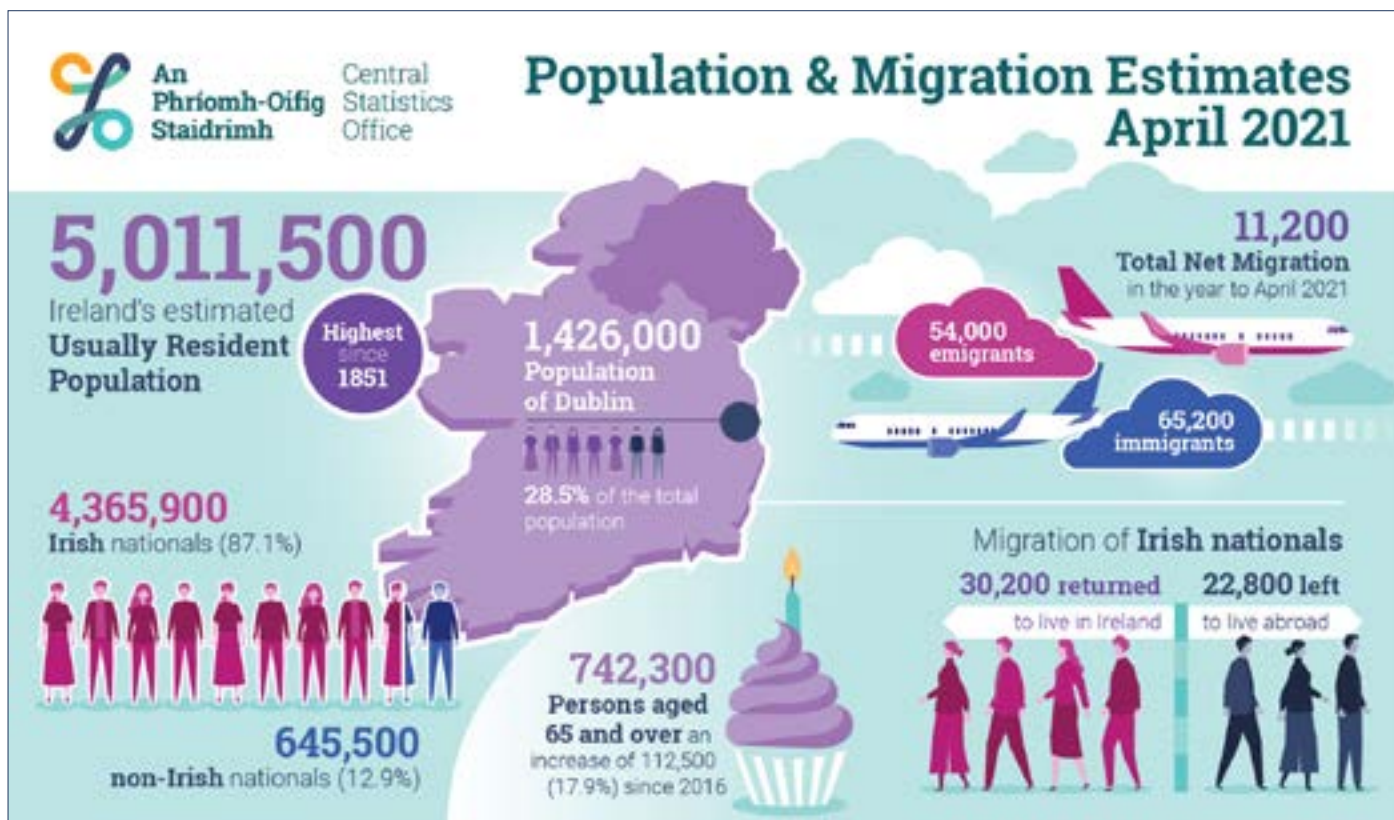


Fig 5.

Source: <https://www.cso.ie/en/interactivezone/visualisationtools/infographics/peopleandsociety/#people-society-pg-24>

What is the estimated % of the Irish population living in Dublin in April 2021?

How many persons are aged 65 and over in Ireland?

Explain briefly some effects of this increase in people aged 65 and over?

What was the trend in migration to Ireland in 2021 and explain briefly one reason for this trend

Name a region of in-migration you have studied.
Describe **one** consequence of in-migration in this region.

Name of region of in-migration

Consequence

L.O. 2.9 assess the interrelationships between the physical world, tourism and transport

L.O. 2.6 examine the causes and implications of climate change

Theme F: Environmental Challenges: Global climate change

Study Fig. 6 which shows National Travel Survey 2019.

Answer the questions which follow.

A.



Fig 6.

Source: <https://www.cso.ie/en/interactivezone/visualisationtools/infographics/peopleandsociety/#people-society-pg-99>

(i) What percentage (%) of Irish cars are electric vehicles? _____

(ii) Who drives more? Tick the correct box. Dublin Rest of country

(iii) Give one reason for your answer?

(iv) What percentage (%) of journeys were made by car and public transport in 2019? _____

(v) According to the survey, name one way we can encourage more use of public transport?

B.

The Sustainable Development Goals (SDGs) are a new plan for the world and provide a unique opportunity to address the most urgent and fundamental needs of millions of people in Ireland and around the world.



Fig 7.

What are the specific SDGs that are directly related to climate action?

SDG's Number	
--------------	--

Discuss two possible impacts of global climate change. You should support your answer with specific examples. Use evidence from the diagram in Figure 7.

Impact 1:

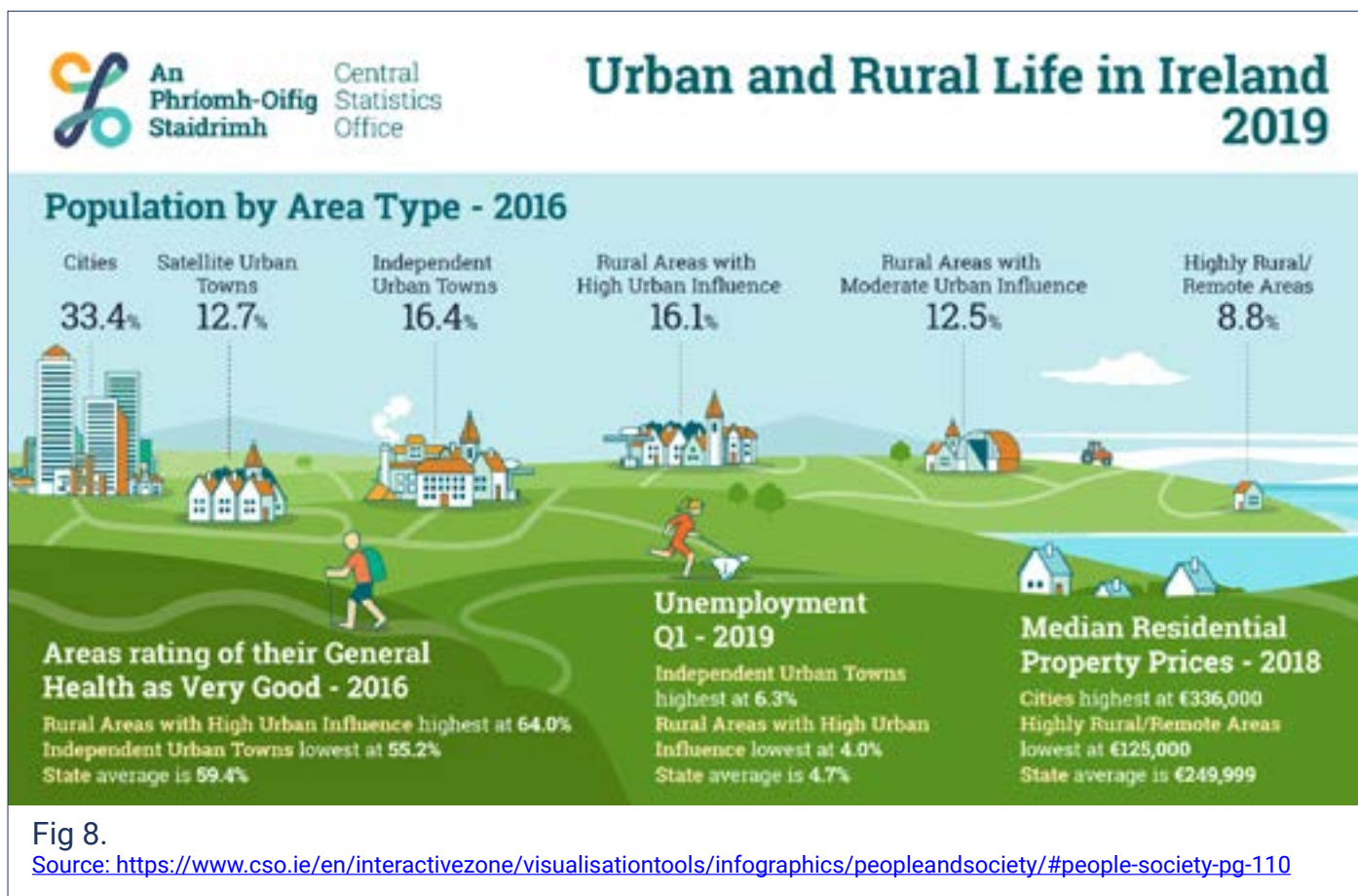
Impact 2:

L.O 3.4 consider the factors affecting the location and origin of rural and urban settlement in Ireland

Theme G: People and Where They Live

Study Fig. 8 which shows Urban and Rural Life in Ireland 2019

Answer the questions which follow.



(i) State the percentage % of Irish people living in cities and satellite urban towns in 2016?

(ii) Calculate the difference between median residential property prices in cities and that of the State average?

(iii) Explain one reason why people move into cities in developed countries like Ireland.

(iv) Underline the word in the list below which means the movement of people from rural areas (countryside) to live in cities.

Urbanisation

Urban Sprawl

Counterurbanisation

L.O. 2.2 evaluate the environmental, economic, and social consequences of rock exploitation and energy resources

Theme H: Managing Our Resources (SDG 7)

Study Fig. 9 which shows Affordable and Clean Energy

Answer the questions which follow.



Fig 9.

Source: <https://www.cso.ie/en/interactivezone/visualisationtools/infographics/othercsopublications/#other-pg-25>

(i) State the percentage of houses heated by natural gas in 2016?

(ii) Name a county with over 61% of households with oil central heating in 2016

(iii) State one renewable energy source in Ireland. Explain one problem that it has caused.

Renewable energy source:

Problem:

(iv) What can Ireland do to keep our CO2 emissions per person lower per year?

L.O. 3.7 compare life chances for a young person in relation to gender equality, health care, employment and education opportunities in a developed and a developing country

Theme I: Education and Levels of Development (SDG 4)

Study Fig. 10 which shows educational opportunities in Ireland

Answer the questions which follow.

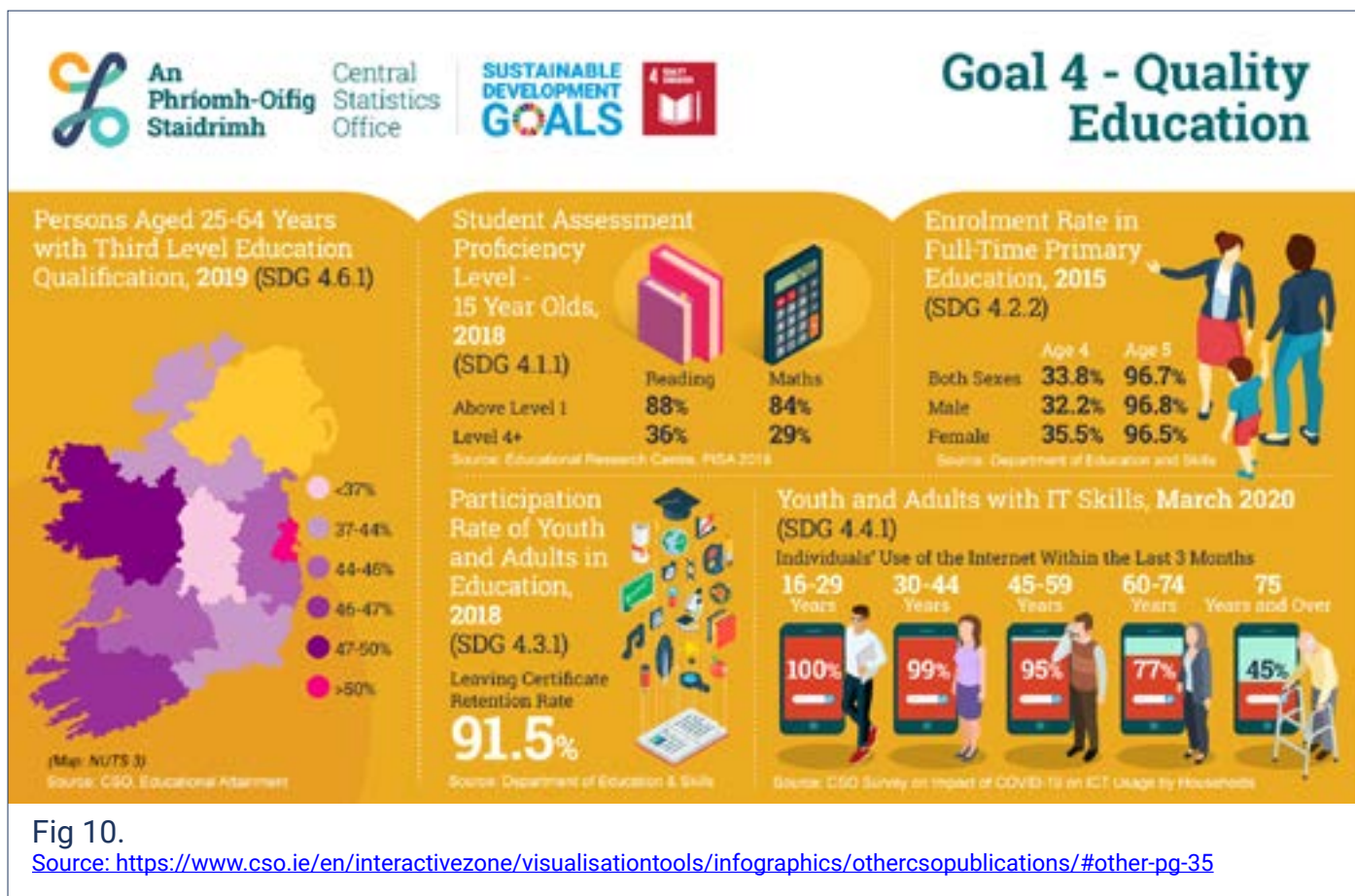


Fig 10.

Source: <https://www.cso.ie/en/interactivezone/visualisationtools/infographics/othercsopublications/#other-pg-35>

(i) State the Leaving Certificate retention rate in 2018 according to the Department of Education and Skills?

(ii) Suggest why over 50% of persons aged 25-64 years living in Dublin in 2019 have Third Level Education Qualification?

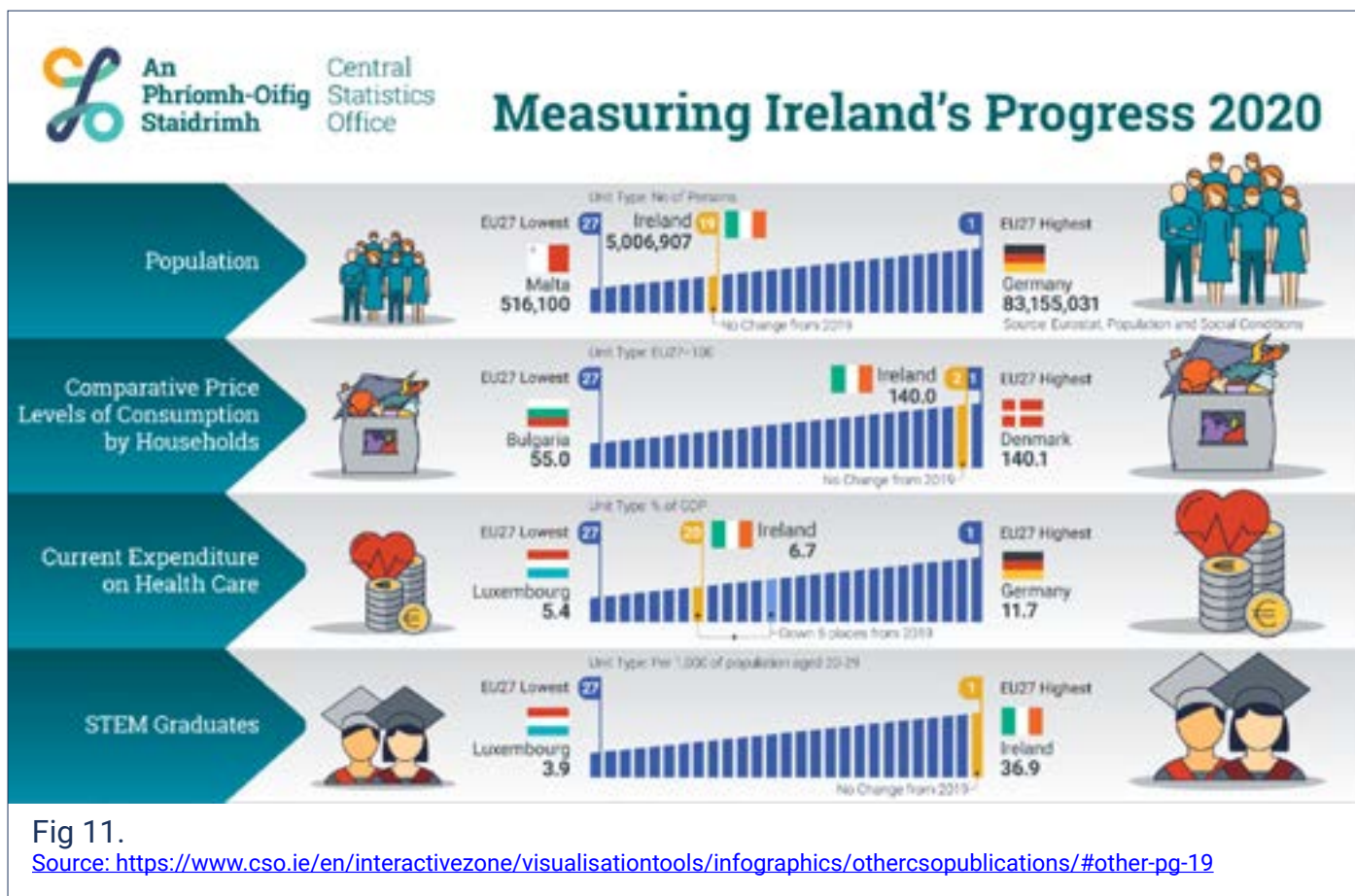
(iii) What Percentage (%) of 60-74 year olds have used the Internet within the first three month of 2020?

(iv) What is the average percentage (%) of reading and maths for 15-year olds above Level 1 according to the PISA results for Ireland in 2018?

L.O. 3.9 synthesise their learning of population, settlement and human development within the process of globalisation.

Theme J: Contrasts in European Development

Study Fig. 11 which shows Measuring Ireland's Progress in 2020 relative to EU27 countries
 Answer the questions which follow.



*STEM = the idea of educating students in four specific disciplines – science, technology, engineering and mathematics

(i) Germany has the largest population in the EU27 countries with 83 million people (Rank 1), where does Ireland rank in terms of EU 27 Countries population?

(ii) Explain why some countries are less developed than others.
 Choose from **one** of the factors below.

Health care

Education

Household Consumption

Chosen factor:

Explanation:

L.O. 3.7 compare life chances for a young person in relation to gender equality, health care, employment and education opportunities in a developed and a developing country
SDG: 5 – Gender Equality

Theme K: People and Gender Equality

Study Fig. 12 which shows Gender Equality in Ireland

Answer the questions which follow.



Fig 12.

Source: <https://www.cso.ie/en/interactivezone/visualisationtools/infographics/othercsopublications/#other-pg-31>

(i) State the proportion of females in managerial positions.

(ii) What percentage (%) of seats in local government are held by woman in the Cork-Kerry region in 2019?

(iii) Explain in a tweet what 'gender equality' means.

L.O 3.7 compare life chances for a young person in relation to gender equality, health care, employment and education opportunities in a developed and a developing country

Theme L: Women and Men in Ireland 2019

Study Fig. 13 which shows gender statistics for Ireland 2019

Answer the questions which follow.



- (i) State the average age that woman in Ireland give birth to their first child in 2019

- (ii) What was the percentage (%) increase of female representation in the Dáil from 2014 to 2018?

- (iii) Which gender has the highest percentage (%) of Third Level Education qualifications in 2019?
 Tick (✓) the correct box. Male [] Female []
- (iv) By how many years has male life expectancy at birth increased from the 1920's to 2012?

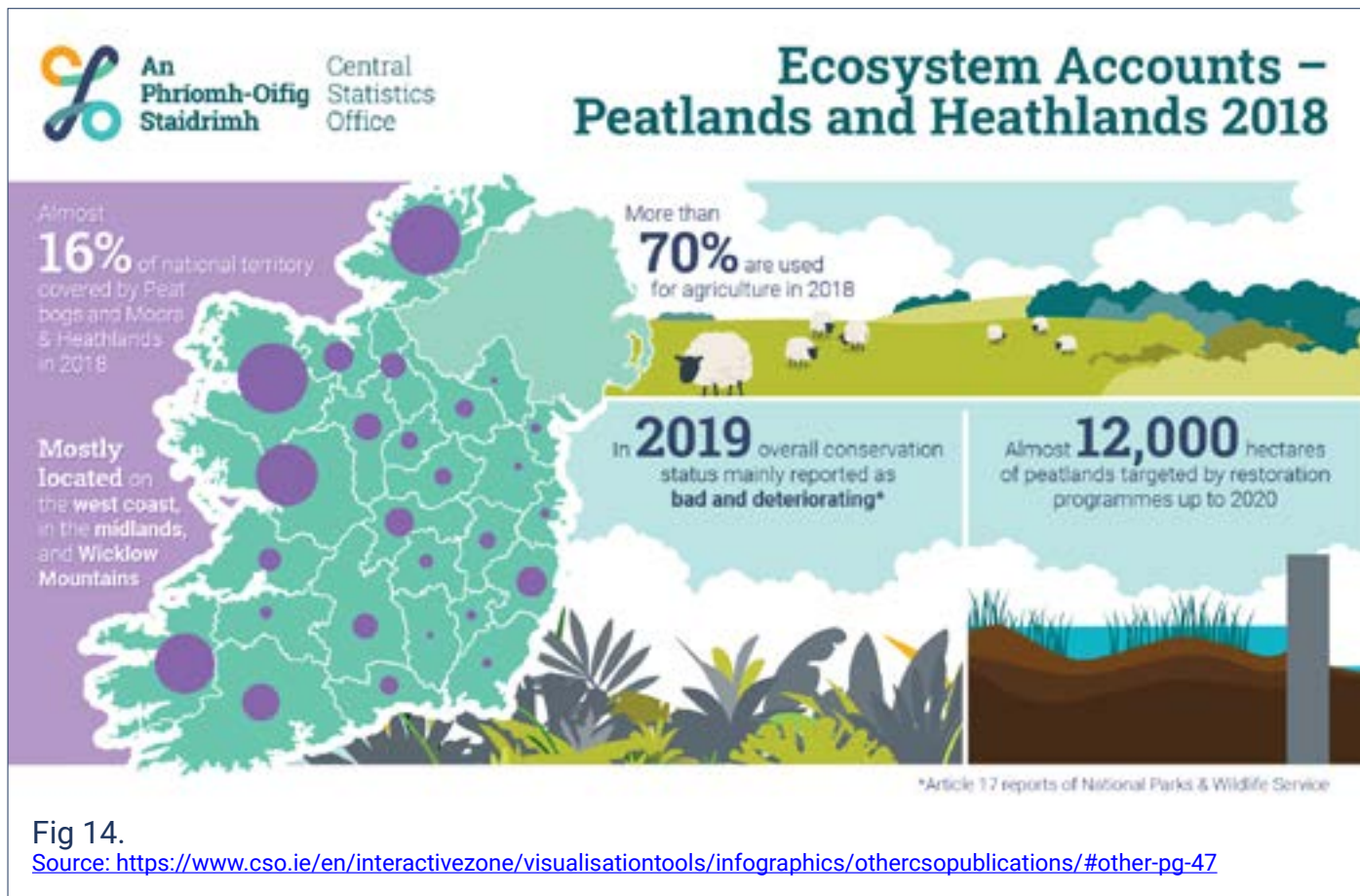
- (v) Suggest one reason for increase in life expectancy from birth

L.O. 1.4 assess a soil type in a local area in relation to composition and vegetation

Theme N: Ecosystems and Sustainability

Study Fig. 14 which shows Peatlands Ecosystems in Ireland 2018

Answer the questions which follow.



(i) What % of Irish National Territory is covered by Peat Bogs and Moors & Heathlands in 2018?

(ii) Name 3 counties on the western seaboard with a large percentage of peatlands

County 1:

County 2:

County 3:

(iii) For a named farming area which you have studied, state fully one way in which technology has been used to reduce the impact of climate.

Named farming area:

Technology to reduce impact of climate:

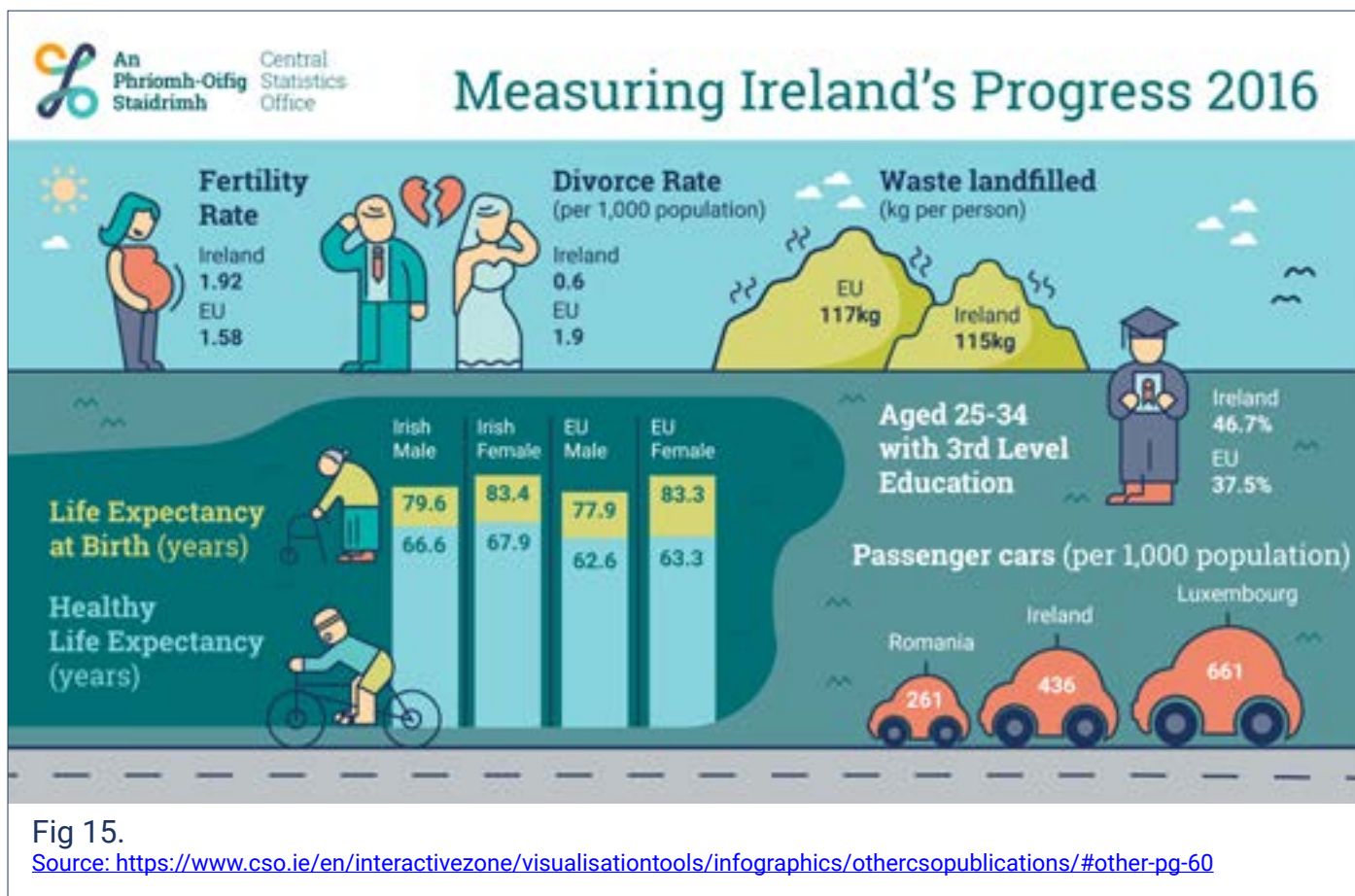
L.O 3.1 use the demographic transition model to explain populations' characteristics and how populations change

L.O 3.3 examine population change in Ireland and in a developing country

Theme O: Measuring Ireland's Progress in 2016

Study Fig. 15 which shows CSO statistics for Measuring Ireland's Progress 2016

Answer the questions which follow.



(i) State the meaning of the term population structure.

(ii) Explain one impact on the EU-27 of having a low fertility rate.

(iii) What is the average Life Expectancy at Birth for an Irish person? Tick (✓) the correct box.

81.5 [] or 80.6 []

(iv) Using the infographic does Ireland or the EU-27 have better outcomes in general progress? Account for your answer using evidence from the infographic

L.O 3.9 synthesise their learning of population, settlement and human development within the process of globalisation

Theme P: Ireland's Trade in Goods 2019

Study Fig. 16 which shows Ireland's Trade in Goods 2019

Answer the questions which follow.



(i) Order the countries with most goods exported from Ireland in terms of value (€) from the list below. **Order Country:**

China [] South Africa [] UK [] Brazil []

(ii) Which region did Ireland import most of its €91 billion worth of goods in 2019?

(iii) In 2019 did Ireland export or import more good to Asia? Tick (✓) the correct answer.

Export [] Import []

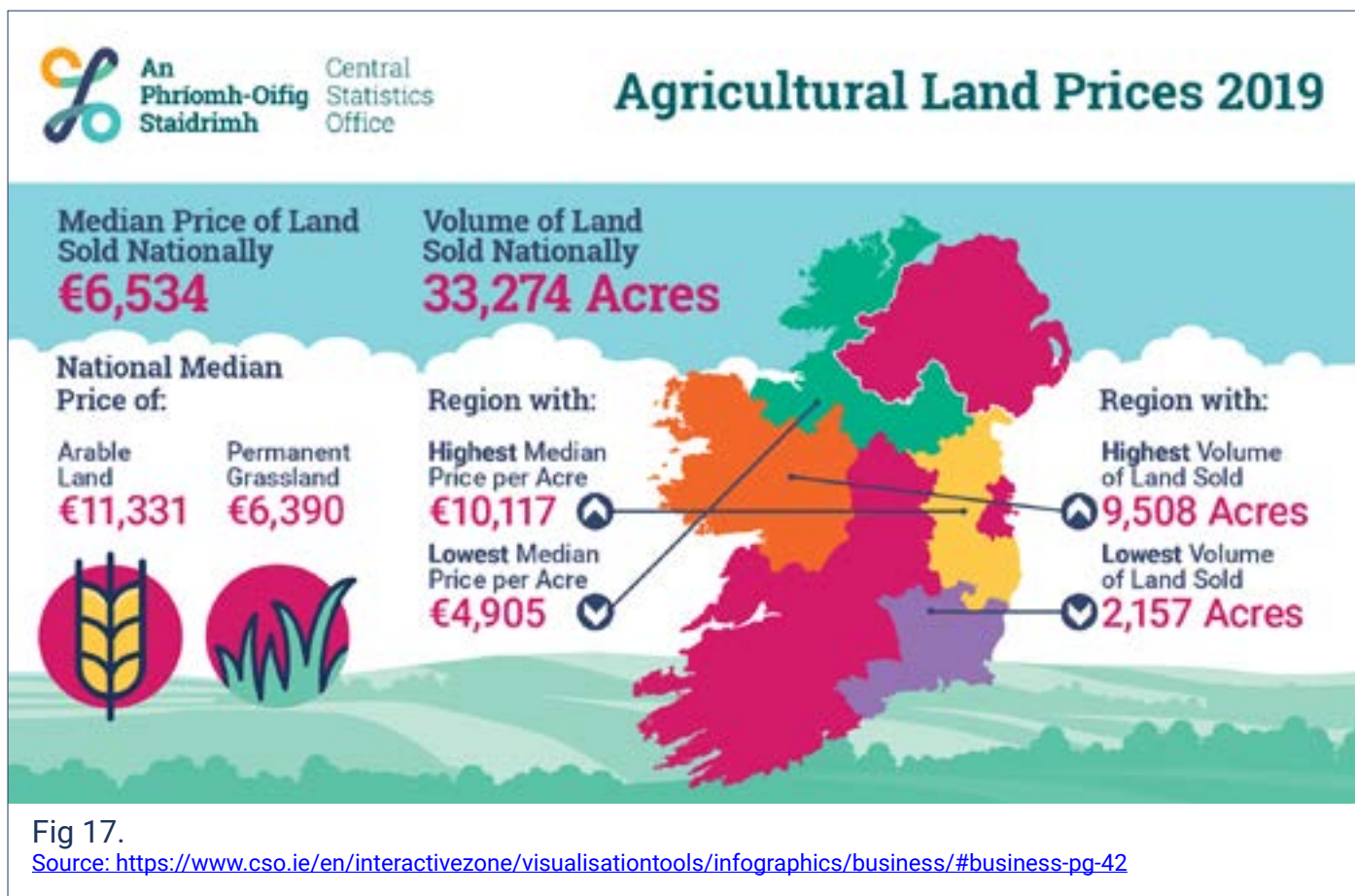
(iv) What was the difference in value in billions (€bn) of goods exported and imported in 2019?

L.O 2.3 identify how the physical landscape influences the development of primary activities

Theme Q: Agricultural Land Prices in Ireland 2018

Study Fig. 17 which shows Ireland's Agricultural land Prices 2018

Answer the questions which follow.



(i) What was the Highest Median Price per Acre in € and in what province/region was this land sold in?

Price in €:

Province/Region:

(iii) From the infographic above which land is more valuable, arable land or grassland?

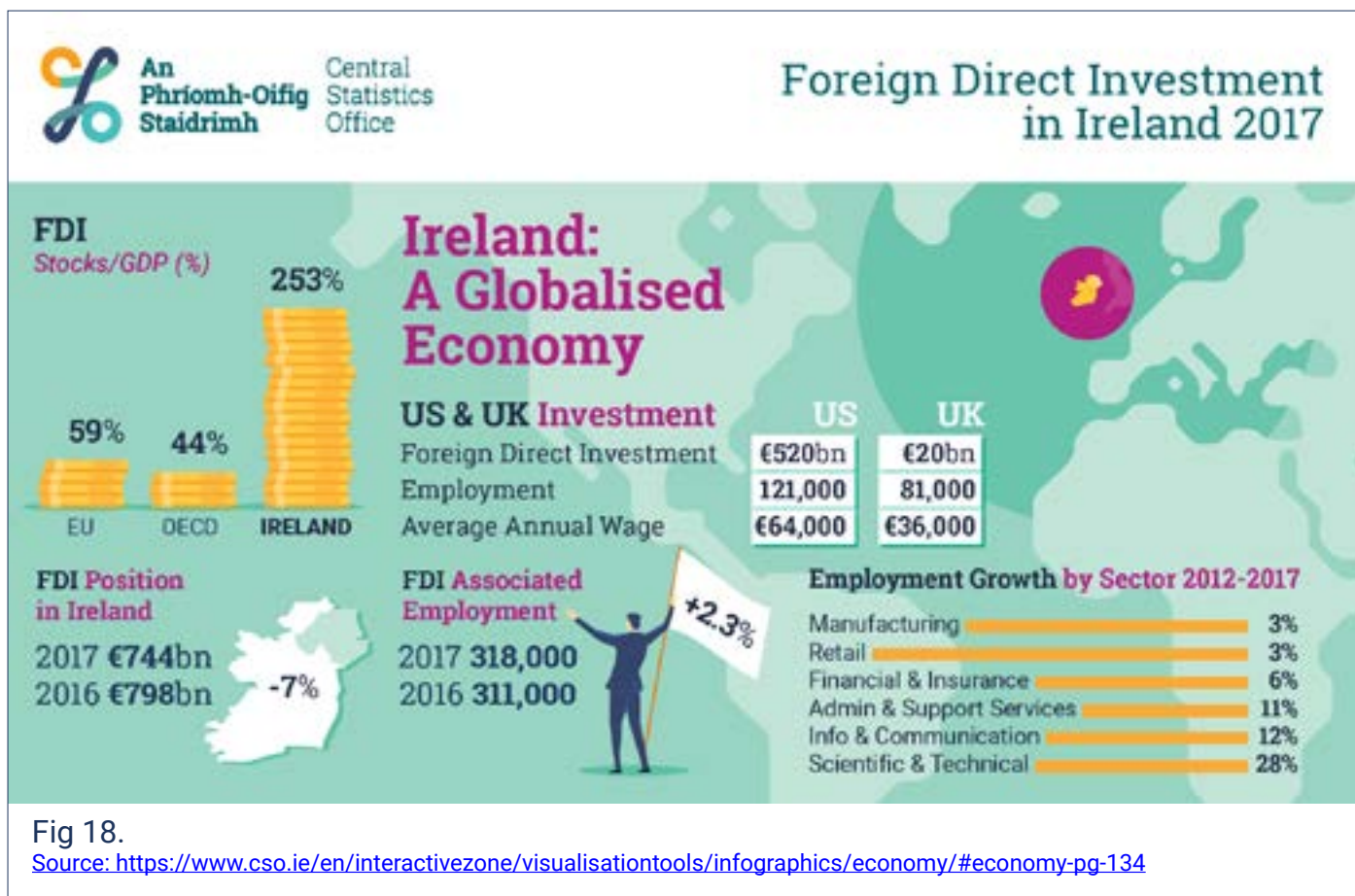
(iii) Looking at the Agricultural Land Prices 2018, why do you think agricultural land is more valuable in the east of Ireland compared to the west of Ireland?

L.O. 3.9 synthesise their learning of population, settlement and human development within the process of globalisation

Theme R: FDI in Ireland 2017

Study Fig. 18 which shows Ireland's Foreign Direct Investment in 2017

Answer the questions which follow.



(i) What was the average annual wage (€) paid by US firms in 2017 in Ireland?

(ii) State the difference in Foreign Direct Investment (€bn) in Ireland between the years 2016 and 2017?

(iii) Which employment sector increased by 28% between the years 2012-2017?

(iv) What is meant by the term 'globalisation'?
